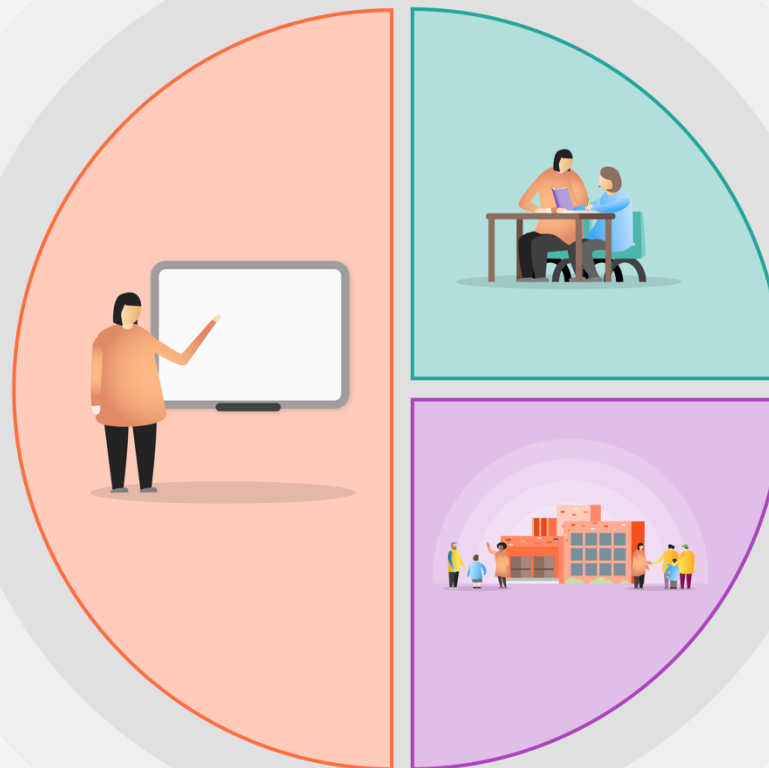


1 Teaching

- ✘ Explicit teaching – teacher led instruction and demonstration breaking activities into smaller steps.
- ✘ Scaffolding tasks with use of precise assessment, e.g. checklists
- ✘ Cognitive and metacognitive strategies e.g. mindmaps.
- ✘ Flexible groups within the Key Stage and classroom.
- ✘ Year 5 / 6 cohort to have 1.5 fte teachers to allow for high quality teaching in smaller groups.
- ✘ Clear, precise assessments to identify gaps in learning.
- ✘ Effective and specific feedback.
- ✘ Continuing to access technology where appropriate, e.g. for SEND children.
- ✘ CPD for teaching and support staff.



2 Targeted academic support

- ✘ Careful identification of those children needing support outside of high quality teaching.
- ✘ Teaching assistants to have a focussed portfolio rather than a class base.
- ✘ Shine interventions for maths and reading.
- ✘ Support for phonics throughout the school.
- ✘ Flexible strategies supporting SEND children.

3 Wider strategies

- ✘ Support for social and emotional needs.
- ✘ Review behaviour policy.
- ✘ Meaningful communication with parents / carers – virtual parents' consultation evenings.